

New York Ocean and Great Lakes Atlas

www.nyoglatlas.org

Purpose: To provide New York State decision makers and public with access to geographic information related to Ecosystem-based Management as directed by Environmental Conservation Law Article 14 of the Ocean and Great Lakes Ecosystem Conservation Act

What is the Atlas?

The Atlas is a tool for sharing geographic data about New York through an online mapping Atlas and a Data Catalog. The online mapping Atlas provides access to data, while the Data Catalog allows users to search for information by key words and links users to data on other web sites.

Geographic Information Uses:

- Learn about your neighborhood, town, county, and state
- Combine information or data layers to:
 - Plan future land-uses and calculate social, economic and environmental impacts
 - Evaluate change by comparing time stamped layers
 - Understand the world around you

How information is collected:

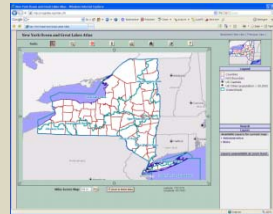
Information included in the Atlas is related to Ecosystem-based Management, which includes social, economic and environmental information (e.g. ,everything.) It is also related to a place (so it can be mapped) and has a record of how it was created (metadata.) Currently most of the data has been collected through requests to data providers. While there is a board range of information collected, efforts have recently concentrated on what stakeholders have indicted as critical through an online survey and

workshop. Our goal is to target information most useful to active Ecosystem-based Management projects.

Information found in the Atlas:

- **Environment:** water quality, habitats, species distribution, geology, elevation
- **Boundaries:** town, county, parks, watersheds
- **Social:** demographic information, historic places
- **Infrastructure:** utilities, roads, navigational aids

Atlas Components



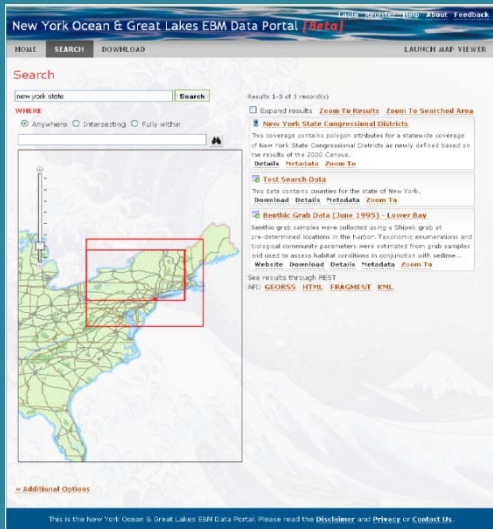
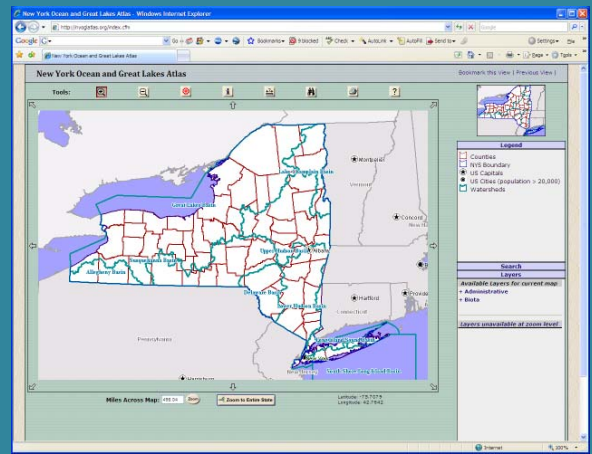
Online Atlas
View, print, and download data



Data Catalog
Search for data

Online Atlas Functions:

- **Zoom** to an area of interest
- **Select** information to view by clicking on and turning off data layers
- **Print** maps
- **Download** Information in three GIS formats: ESRI shapefiles, MapInfo tab files, and open source KML files
- Opens downloaded KML files directly in **GoogleEarth** (a free viewer)

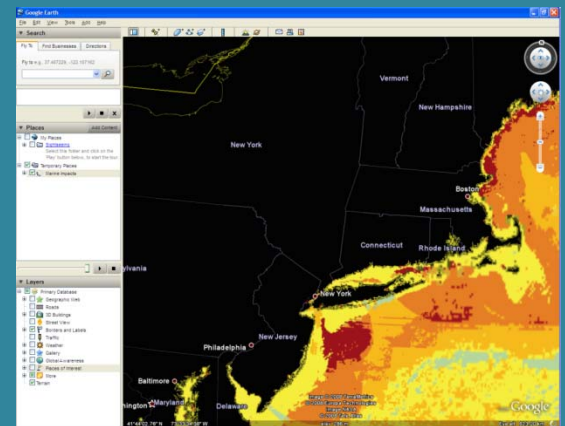


Data Catalog Functions:

- **Keyword** searches metadata
- **Download** information's metadata
- **View** map showing information location
- **Links** to map view of the data either on the Online Atlas or in the information creator's web site
- **Upload** created metadata

Tools Being Planned:

- **Evaluate** changes over time
- **Understand** impacts of different land-use choices during planning process
- **Simplify** multiple sets of complex information, for better understanding of interactions.
- **Support** holistic approaches by combining social, economic, and environmental information in decision making processes



Sharing Options for Data Providers:

- Upload Metadata to Data Catalog, will point users to your hosting site
- Provide full data for inclusion in Data Catalog and Atlas
- Link data to the Atlas through WMS/WFS (Future Capability)